

CERTIFIED LAND CORNER RECORDATION

DESCRIPTION OF CORNER EVIDENCE FOUND, AND ORIGINAL RECORD (If known)

LOCATION Found 12" x 8" x 6" granite stone with "1/4" (tipped)
 1/4 G.L.O. record - Granite Boulder 16 x 8 x 7 for 1/4 Sec Cor
 S.3 S.2 (John B. Thomas, September 1870)
 T.15N., R.66W.
 6th P.M.

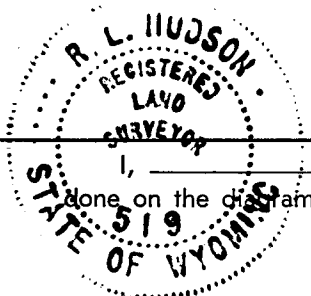
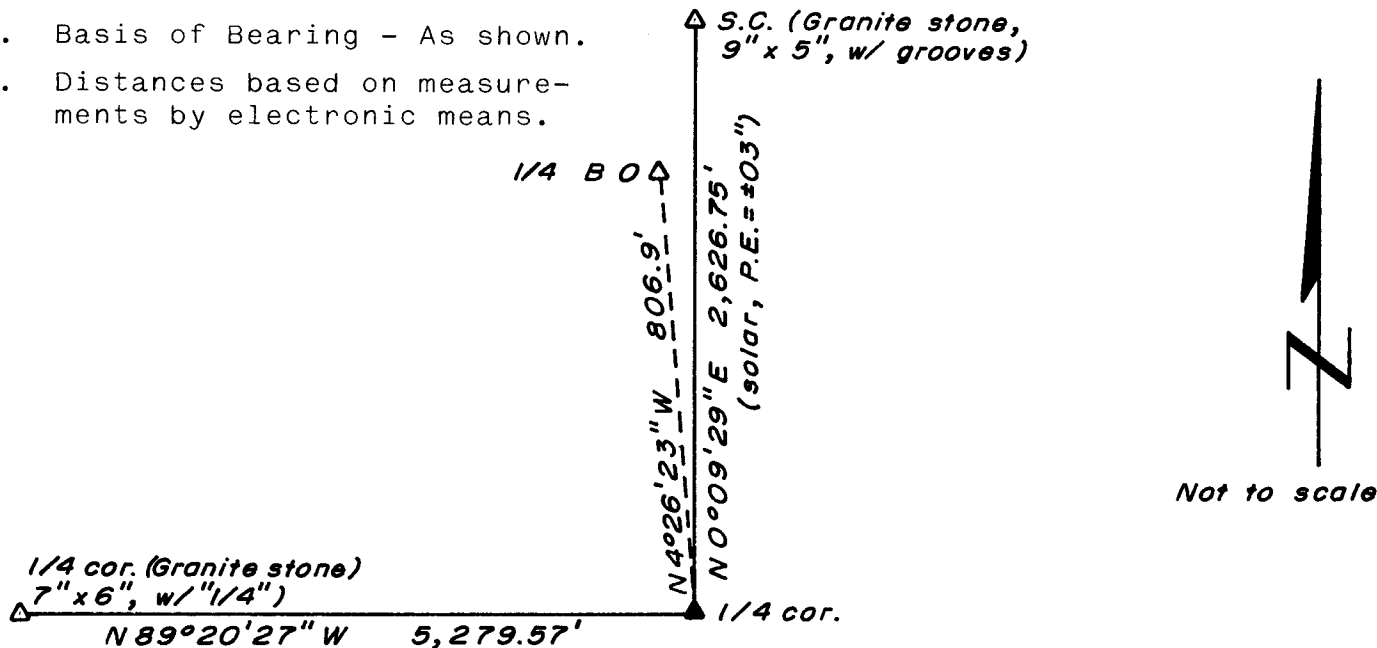
DESCRIPTION OF MONUMENT AND ACCESSORIES ESTABLISHED
 TO PERPETUATE THE ORIGINAL LOCATION OF THIS CORNER:

At the corner: Replanted stone with "1/4" on west.
 Chiseled "X" on top.

Accessories: Granite stone, 12" x 8" x 6", with "B O" (for bearing object)
 on west and "X" on top bears N 4° 26' 23" W, 806.9 feet distant.
 Raised rock mound around marked stone.

SKETCH, WITH COURSE AND DISTANCE TO ADJACENT CORNER IF DETERMINED IN THIS SURVEY.
 (May Sketch or Paste Reproduction on Reverse Side.)

1. Basis of Bearing - As shown.
2. Distances based on measurements by electronic means.



I, R. L. Hudson certify that I have carefully performed or reviewed the work done on the diagrammed corner as reported on this recordation form and approve the same.

R. L. Hudson Wyoming L.S. No. 519
 Signature of Surveyor Registration No.

STATE OF WYOMING,
 Office of Clerk and Recorder,
 County of _____

This "corner record" was filed for record on the 5 day of May, 1978, was noted on the cross-index plat and is assigned page No. _____, in book No. _____.

James C. Whitehead
 County Official

Cross Index No.	T. _____	R. _____	Mer.
	<u>C17</u>	<u>15</u>	<u>60</u>
	_____	_____	Mer.
	_____	_____	Mer.
	_____	_____	Mer.
	_____	_____	Mer.
	_____	_____	Mer.
	_____	_____	Mer.